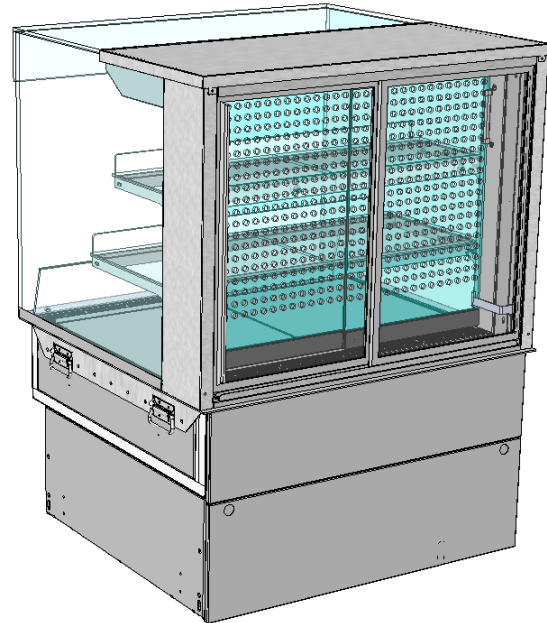
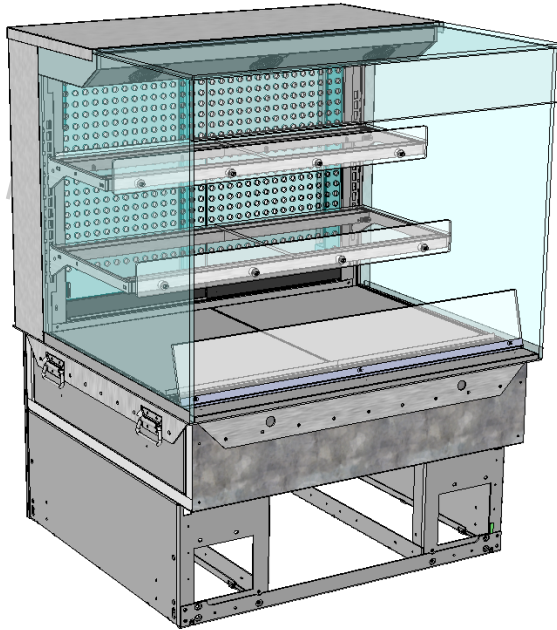


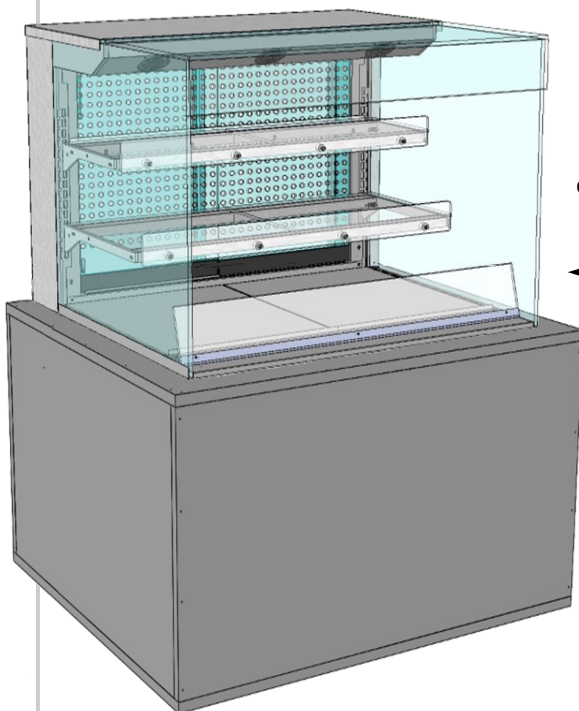
# Reveal<sup>®</sup> Self-Service Counter Design Guide

SCC P/N  
21-26260

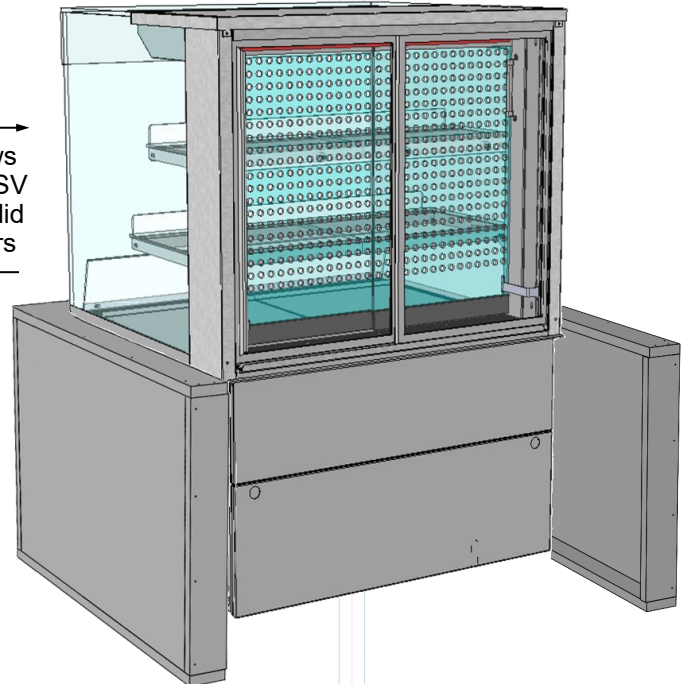
## REVEAL<sup>®</sup> MODEL NE(L)(H)HSSV HEATED SELF-SERVICE CASES



--- Front and Rear Views of Model NE3627HSSV Shown Prior To Being Slid Into Service Counters ---



Front and Rear Views  
of Model NE3627HSSV  
Shown After Being Slid  
Into Service Counters



**Structural Concepts<sup>®</sup>**

DELIVERING FRESH. ALWAYS.™

Structural Concepts Corp. · 888 E. Porter Rd · Muskegon, MI 49441 Phone: 231.798.8888 Fax: 231.798.4960 · [www.structuralconcepts.com](http://www.structuralconcepts.com)

**Important! See Page 3 For Structural Support Warning,  
Model Applicability & Critical Design Guide Notes.**

## TABLE OF CONTENTS

TABLE OF CONTENTS .....	2
STRUCTURAL SUPPORT WARNING / MODEL APPLICABILITY & DIMENSIONS / SERVICE COUNTER DESIGN GUIDE NOTES .....	3
SERVICE TOP CUTOUT DIMENSIONS / MINIMUM COUNTER SURFACE REQUIREMENTS - CASE FRONT VIEW .....	4
SERVICE TOP CUTOUT DIMENSIONS / MINIMUM COUNTER SURFACE REQUIREMENTS - CASE REAR VIEW .....	5

# **STRUCTURAL SUPPORT WARNING**

## **CABINET MUST BE CONSTRUCTED TO HOLD THE WEIGHT OF THE CASE. CASE IS SUPPORTED ON THREE SIDES (FRONT/LEFT/RIGHT) BY A TRIM RING.**

**Model Applicability & Dimensions**

<b>Model</b>	<b>Upper Display Height</b>	<b>Overall Height</b>	<b>Depth x Length</b>
NE3613HSSV	13 5/8"UDH	32 7/8"OH	33"D x 35 3/4"L
NE3620HSSV	20 3/8"UDH	39 5/8"OH	33"D x 35 3/4"L
NE3627HSSV	27 7/8"UDH	47 1/8"OH	33"D x 35 3/4"L
NE3635HSSV	35 1/4"UDH	54 5/8"OH	33"D x 35 3/4"L
NE4813HSSV	13 5/8"UDH	32 7/8"OH	33"D x 47 3/4"L
NE4820HSSV	20 3/8"UDH	39 5/8"OH	33"D x 47 3/4"L
NE4827HSSV	27 7/8"UDH	47 1/8"OH	33"D x 47 3/4"L
NE4835HSSV	35 1/4"UDH	54 5/8"OH	33"D x 47 3/4"L

## **Service Counter Design Guide Notes**

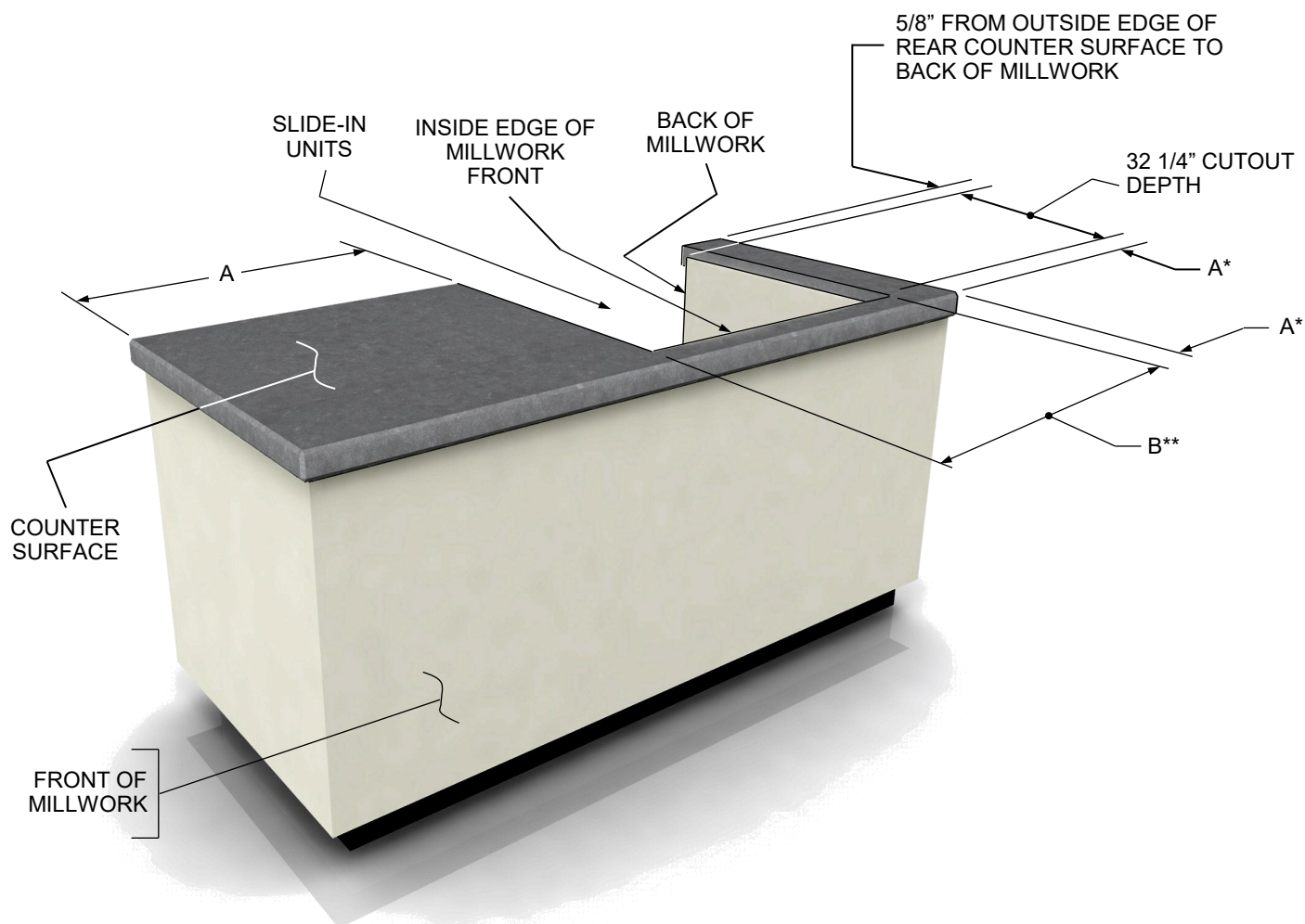
1. This guide applies to Models NE(L)(H)HSSV. See Model Applicability & Dimensions chart (above) for specific models.
2. This guide does NOT cover every possible installation scenario.
3. SCC is not responsible for incorrect designs or installations.
4. Contact SCC Technical Support with questions.
5. See SCC Installation & Operating Manual P/N 21-26059 (which should accompany this guide) for additional information about these merchandisers.

# SERVICE TOP CUTOUT DIMENSIONS / MIN. COUNTER SURFACE REQUIREMENTS - CASE FRONT VIEW

SERVICE TOP CUTOUT DIMENSIONS		
MODELS	A*	B**
NE3613HSSV	1 1/2" MINIMUM	35"
NE3620HSSV	1 1/2" MINIMUM	35"
NE3627HSSV	1 1/2" MINIMUM	35"
NE3635HSSV	1 1/2" MINIMUM	35"
NE4813HSSV	1 1/2" MINIMUM	47"
NE4820HSSV	1 1/2" MINIMUM	47"
NE4827HSSV	1 1/2" MINIMUM	47"
NE4835HSSV	1 1/2" MINIMUM	47"

\* 1 1/2" MINIMUM FROM OUTSIDE EDGE OF COUNTER SURFACE TO CUTOUT

\*\* COUNTER SURFACE CUTOUT WIDTH



--- Service Top Slide-In Unit Dimensions ---

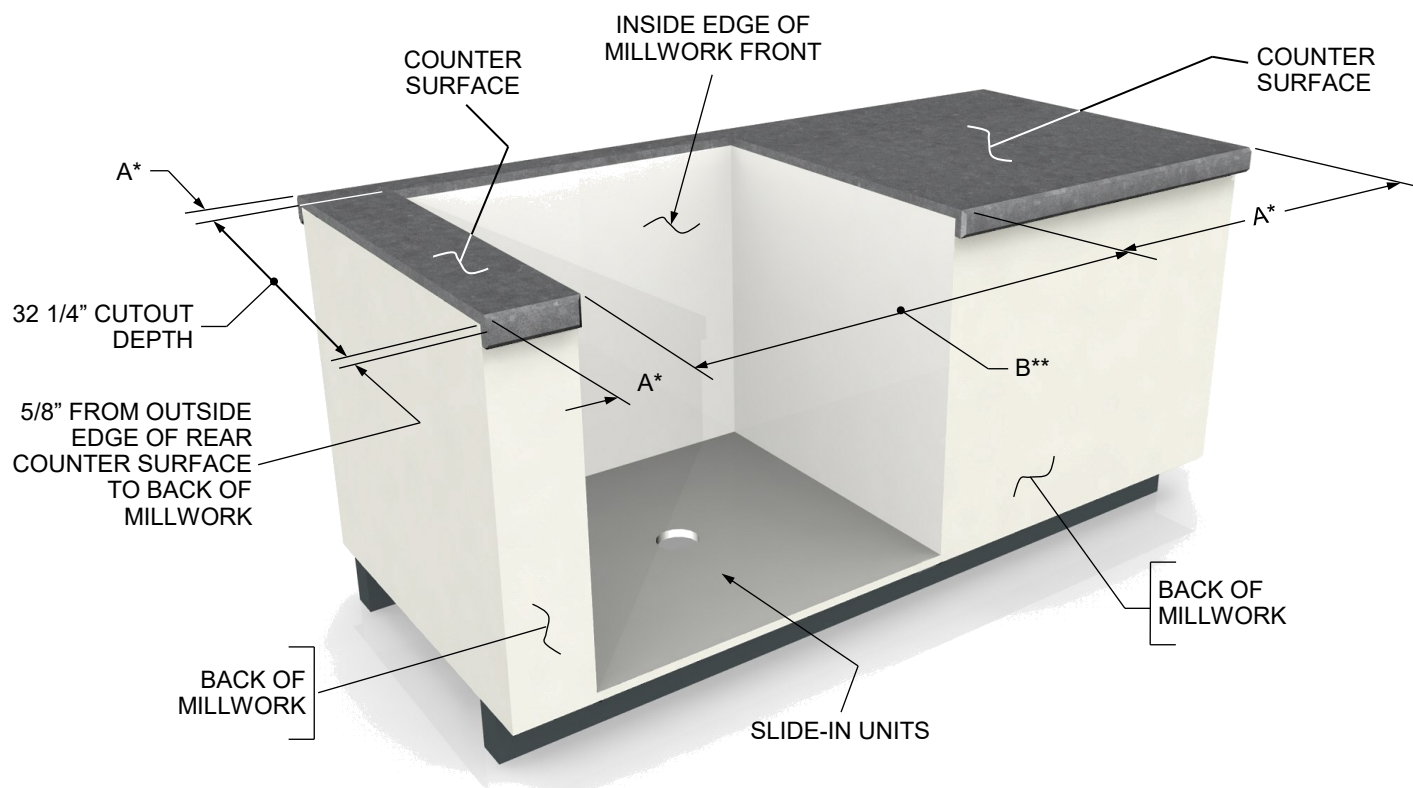
## SERVICE TOP CUTOUT DIMENSIONS / MIN. COUNTER SURFACE REQUIREMENTS - CASE REAR VIEW

### SERVICE TOP MINIMUM COUNTER SURFACE & CUTOUT DIMENSION REQUIREMENTS

MODELS	A*	B**
NE3613HSSV	1 1/2" MINIMUM	35"
NE3620HSSV	1 1/2" MINIMUM	35"
NE3627HSSV	1 1/2" MINIMUM	35"
NE3635HSSV	1 1/2" MINIMUM	35"
NE4813HSSV	1 1/2" MINIMUM	47"
NE4820HSSV	1 1/2" MINIMUM	47"
NE4827HSSV	1 1/2" MINIMUM	47"
NE4835HSSV	1 1/2" MINIMUM	47"

\* 1 1/2" MINIMUM FROM OUTSIDE EDGE OF COUNTER SURFACE TO CUTOUT

\*\* COUNTER SURFACE CUTOUT WIDTH



--- Service Top Slide-In Unit Dimensions ---