

Fusion

GMG 52"H Refrigerated Service Case

Structural Concepts®

DELIVERING FRESH. ALWAYS.™

(Lengths do not include 1-1/8" end panels)

- **GMG4** 48-3/4"L x 43"D x 51-5/8"H
- **GMG5** 60-5/8"L x 43"D x 51-5/8"H
- **GMG6** 73-1/8"L x 43"D x 51-5/8"H
- **GMG8** 97-1/2"L x 43"D x 51-5/8"H
- **GMG10** 121-1/8"L x 42-3/4"D x 51-5/8"H
- **GMG12** 146-1/4"L x 42-3/4"D x 51-5/8"H

Included

- Gravity coil
- Integrated average product temperature of 40°F or less
- LED top light
- Lift-up front glass
- One year parts & labor; 5 year compressor warranty
- Stainless steel rear exterior



GMG6

Specify	Standard Features	Additional Options
EXTERIOR COLOR	• Laminate (stock colors)	• Laminate (non-stock colors) • Powder coated (stock/non-stock colors) • Powder coated Silversan Black • Stainless steel
INTERIOR COLOR	• Stainless steel interior	
LOWER FRONT PANEL COLOR	• Powder coated Silversan Black	• Powder coated (stock/non-stock colors) • Stainless steel
BASE SUPPORT	¹ • Casters w/ levelers (self-cont.)	• Rail system for shims (remote)
BUMPER FRONT	• 1" Boston bumper (specify color)	• 1" Stainless steel plate rail bumper
DISPLAY	• Wire rack deck	• Ice pans, requires floor drain
END PANELS	• Full w/stainless steel mirror interior	• Cutaway w/glass • None (specify per line-up)
FRONT GLASS	• Curved	• Flat angled
SCALE STAND	• None	¹ • Scale stand w/ receptacle & CAT5 (specify location) ² • Scale stand w/ receptacle (specify location)
REAR DOORS	• Clear glass rear sliding doors	• Reflective glass rear sliding doors
LIGHTS	• LED 4000K w/ frosted lens	
ELECTRICAL CONNECTION	² • 6' Straight blade power cord (self-cont.)	• 6' Locking power cord (self-cont.) • Electrical leads (remote)
REFRIGERATION	³ • Breeze self-contained refrigeration	• Remote DX refrigeration • Remote w/thermostat, solenoid & TXV
SENSOR	• None	• CPC discharge air sensor (remote)
MISCELLANEOUS		• Front glass lock • Rear door lock
ACCESSORIES		• Clean Sweep® coil cleaner (self-cont.) • Drain strainer • Rear wrapping board, white Sanalite®

Std Notes: 1 - N/A on 10ft, 12ft
2 - N/A on 10ft, 12ft
3 - N/A on 10ft, 12ft

Option Notes: 1 - Separate circuit required
2 - Separate circuit required

Fusion

GMG 52"H Refrigerated Service Case

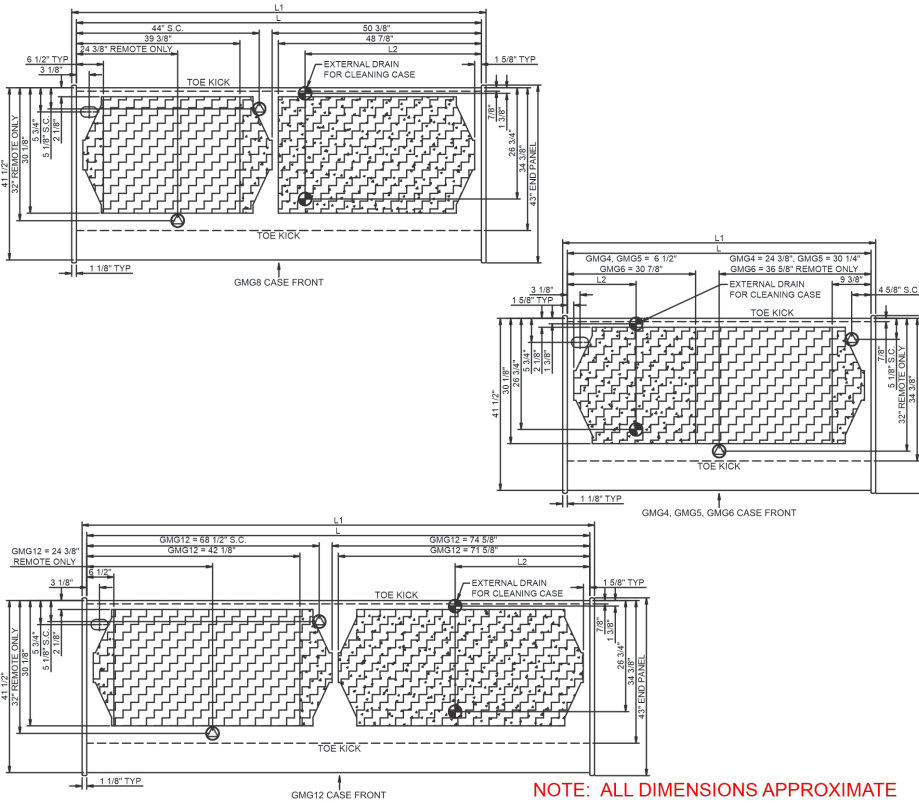
Structural Concepts®

DELIVERING FRESH. ALWAYS.™

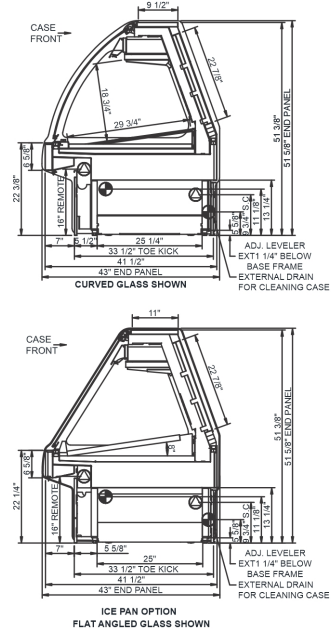
Intended Environment: Type I - Designed to operate in ambient conditions of 75°F with 55% relative humidity unless noted otherwise in system information below.

Zone	Intended Product To Be Displayed	Warmest Avg Prod Temp ° F
1	Unpackaged refrigerated products	38

PLAN VIEW



SIDE VIEW



NOTE: ALL DIMENSIONS APPROXIMATE

- ELECTRICAL JUNCTION BOX (SUPPLIED WITH 6" LEADS OR POWER CORD).
- REFRIGERATION LINE CONNECTION.
- SELF-CONTAINED CASE SERVICE ACCESS AREA.
- REMOTE DRAIN TUBE FOR REMOTE REF. ONLY (SUPPLIED WITH 3/4" OR 1 1/2" PVC TUBE).
- REFRIGERATION FLOOR SINK & UTILITIES ACCESS AREA.
- DRY CASE SERVICE ACCESS AREA.

Model Technical Specifications														
Model	L"	L1"	L2"	System Circuit Volts			Phs	Freq	Amps ***	Watts	Wires	NEMA Plug	SST	Conv. Rack BTUH
GMG4	48.75	51.00	13.38	Remote (DX)	Circuit #1	110-120	1	60	1.23	124	2+G	Leads Multiple	18.00	1382
				Self-Contained (R513A)	Circuit #1	110-120	1	60	10.43	798	2+G	5-20P or L5-20P	N/A	N/A
				Self-Contained (R513A)	Circuit #1	110-120	1	60	10.12	769	2+G	5-20P or L5-20P	N/A	N/A
GMG5	60.63	62.88	13.38	Remote (DX)	Circuit #1	110-120	1	60	1.46	160	2+G	Leads Multiple	18.00	1728
				Self-Contained (R513A)	Circuit #1	110-120	1	60	9.92	757	2+G	5-20P or L5-20P	N/A	N/A
				Self-Contained (R513A)	Circuit #1	110-120	1	60	9.92	762	2+G	5-20P or L5-20P	N/A	N/A
GMG6	73.13	75.38	16.38	Remote (DX)	Circuit #1	110-120	1	60	1.46	160	2+G	Leads Multiple	18.00	2039
				Self-Contained (R513A)	Circuit #1	110-120	1	60	9.92	762	2+G	5-20P or L5-20P	N/A	N/A
				Self-Contained (R513A)	Circuit #1	110-120	1	60	11.46	562	2+G	5-20P or L5-20P	N/A	N/A
GMG8	97.50	99.75	42.50	Remote (DX)	Circuit #1	110-120	1	60	1.69	188	2+G	Leads Multiple	18.00	2722
				Self-Contained (R513A)	Circuit #1	110-120	1	60	16.00	1,071	2+G	5-20P or L5-20P	N/A	N/A
				Self-Contained (R513A)	Circuit #1	110-120	1	60	11.46	562	2+G	5-20P or L5-20P	N/A	N/A
GMG10	121.13	123.38	.00	Remote (DX)	Circuit #1	110-120	1	60	2.80	91	2+G	Leads Multiple	18.00	3404
GMG12	146.25	148.50	.00	Remote Blower (DX)	Circuit #1	110-120	1	60	5.10	155	2+G	Leads Multiple	20.00	4104

*** Does not include electric defrost on freezer models.

Regulatory Approvals:

All Models
 Accordance with AHRI Std 1200
 ETL Listed to UL 471
 ETL Listed to CAN/CSA 22.2 No. 120
 ETL Sanitation to NSF/ANSI 7



In Accordance with
AHRI Std 1200

DOE 2017
 Energy Efficiency
 Compliant

Important Notes:

- 1) ELECTRICAL NOTE: If GFCI is required, a GFCI breaker MUST be used in lieu of a GFCI receptacle.
- 2) 45" minimum door entry clearance required (without shipping skid).
- 3) Units must be shimmed during installation to ensure the unit is level and plumb"

⚠ WARNING: This product can expose you to chemicals, including Urethane (Ethyl Carbamate), which are known to the State of California to cause cancer and birth defects or other reproductive harm. For more information go to www.P65Warnings.ca.gov.