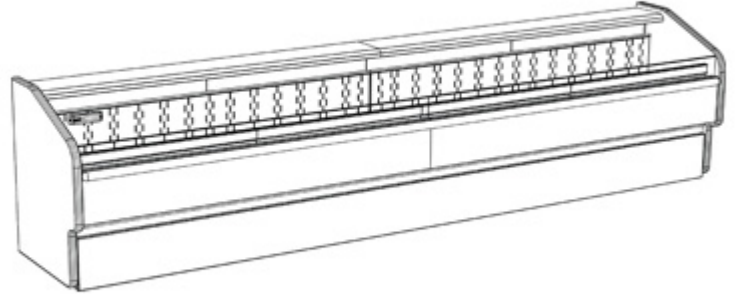


(Lengths do not include 1-1/8" end panels)

- **GJDSS4RLB** 48-3/4"L x 18-5/8"D x 23"H
- **GJDSS5RLB** 60-5/8"L x 18-5/8"D x 23"H
- **GJDSS6RLB** 73-1/8"L x 18-5/8"D x 23"H
- **GJDSS8RLB** 97-1/2"L x 18-5/8"D x 23"H
- **GJDSS12RLB** 146-1/4"L x 18-5/8"D x 23"H

### Included

- Integrated average product temperature of 40°F or less
- LED top light
- One year parts & labor warranty
- Remote DX refrigeration
- Stainless steel rear exterior
- Use with GM remote service models



GJDSS8RLB

Specify	Standard Features	Additional Options
<b>EXTERIOR COLOR</b>	• Powder coated (stock colors, specify RAL#)	• Laminate - Standard colors • Stainless steel
<b>INTERIOR COLOR</b>	• Black powder coated	• Stainless steel
<b>LOWER FRONT PANEL COLOR</b>	• Black powder coated	• Stainless steel
<b>TRIM COLOR</b>	• Black	• Silver
<b>BASE</b>	• Rail system for shims	
<b>BUMPER FRONT</b>	• 1" Boston bumper (specify color)	• 1" Stainless steel plate rail bumper
<b>END PANELS</b>	• None (specify per line-up)	• End bumper (LH / RH) • Full w/stainless steel interior (LH / RH)
<b>PRICE TAG MOLDING</b>	• None	• 1" Price tag molding (black or silver) • Universal price tag molding (clear w/ open top)
<b>LIGHTS</b>	• LED 3500K w/ frosted lens	• LED 4000K w/ frosted lens
<b>ELECTRICAL CONNECT</b>	• Electrical leads (remote)	
<b>REFRIGERATION</b>	• Remote DX refrigeration	• Remote w/thermostat, solenoid & TXV
<b>SENSOR</b>	• None	• CPC discharge air sensor (remote) • Danfoss discharge air sensor (remote)
<b>ACCESSORIES</b>		• Drain strainer

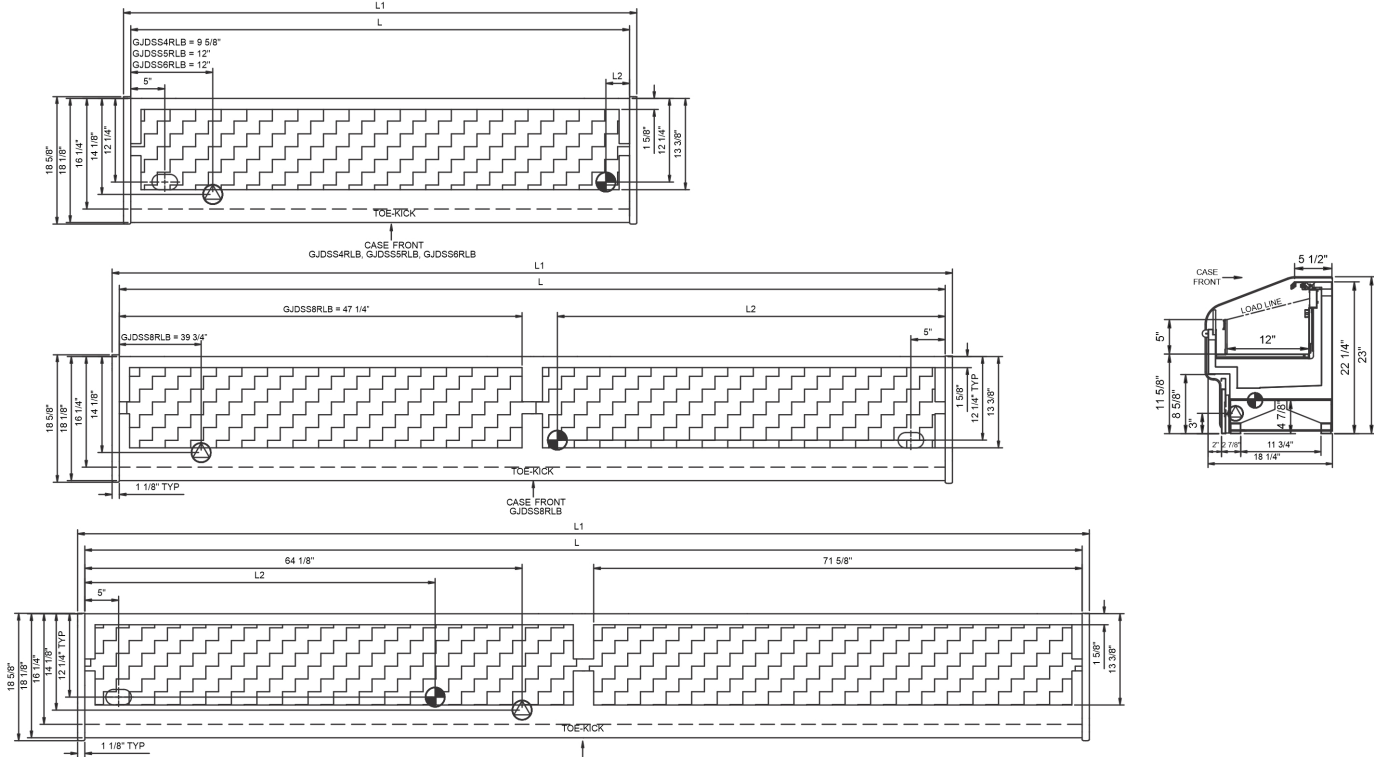
Option Notes: 1 - Not available on front panel/top board

**Intended Environment:** Type I - Designed to operate in ambient conditions of 75°F with 55% relative humidity unless noted otherwise in system information below.

Zone	Intended Product To Be Displayed	Warmest Avg Prod Temp ° F
1	Packaged refrigerated products	40

**PLAN VIEW**

**SIDE VIEW**



NOTE: ALL DIMENSIONS APPROXIMATE

-  **ELECTRICAL JUNCTION BOX**  
(SUPPLIED WITH 6" LEADS OR POWER CORD).
-  **REFRIGERATION LINE CONNECTION.**
-  **SELF-CONTAINED CASE SERVICE ACCESS AREA.**
-  **LOCATION OF DRAIN TUBE FOR REMOTE REF. ONLY**  
(SUPPLIED WITH 3/4" OR 1 1/2" PVC TUBE).
-  **REMOTE FLOOR SINK & UTILITIES ACCESS AREA.**
-  **DRY CASE SERVICE ACCESS AREA.**

**Model Technical Specifications**

Model	L"	L1"	L2"	System Circuit Volts	Phs	Freq	Amps ***	Watts	Wires	NEMA Plug	SST	Conv. Rack BTUH	Para. Rack BTUH	Est Wt		
GJDSS4RLB	48.75	51.00	3.50	Remote(Type I)	Circuit #1	110-120	1	60	1.58	34	2+G	Leads Single	20.00	1080	1000	N/A
GJDSS5RLB	60.63	62.88	3.50	Remote(Type I)	Circuit #1	110-120	1	60	1.63	43	2+G	Leads Single	20.00	1231	1140	N/A
GJDSS6RLB	73.13	75.38	3.50	Remote(Type I)	Circuit #1	110-120	1	60	1.69	53	2+G	Leads Multiple	20.00	1382	1280	N/A
GJDSS8RLB	97.50	99.75	3.50	Remote(Type I)	Circuit #1	110-120	1	60	1.76	66	2+G	Leads Multiple	20.00	2160	2000	N/A
GJDSS12RLB	146.25	148.50	51.38	Remote(Type I)	Circuit #1	110-120	1	60	1.95	99	2+G	Leads Multiple	20.00	3197	2960	N/A
				Remote(Type I)	Circuit #1	110-120	1	60	1.95	99	2+G	Leads Multiple	20.00	3197	2960	N/A

\*\*\* Does not include electric defrost on freezer models.

**Regulatory Approvals:**

All Models  
 Accordance with AHRI Std 1200  
 ETL Listed to UL 471  
 ETL Listed to CAN/CSA 22.2 No. 120  
 ETL Sanitation to NSF/ANSI 7



In Accordance with  
**AHRI Std 1200**

**DOE 2017**  
Energy Efficiency  
Compliant

**Important Notes:**

- 1) ELECTRICAL NOTE: If GFCI is required, a GFCI breaker MUST be used in lieu of a GFCI receptacle.
- 2) Units must be shimmed during installation to ensure the unit is level and plumb.

**⚠ WARNING:** This product can expose you to chemicals, including Urethane (Ethyl Carbamate), which are known to the State of California to cause cancer and birth defects or other reproductive harm. For more information go to [www.P65Warnings.ca.gov](http://www.P65Warnings.ca.gov).

Note: Information is subject to change at any time. Visit [www.structuralconcepts.com](http://www.structuralconcepts.com) for the most current specs.

21874831

Revised 9-12-2022